

BLACKMER PUMP PARTS LIST

MODELS: ATX3 $\frac{1}{2}$ B, ATXS3 $\frac{1}{2}$ B

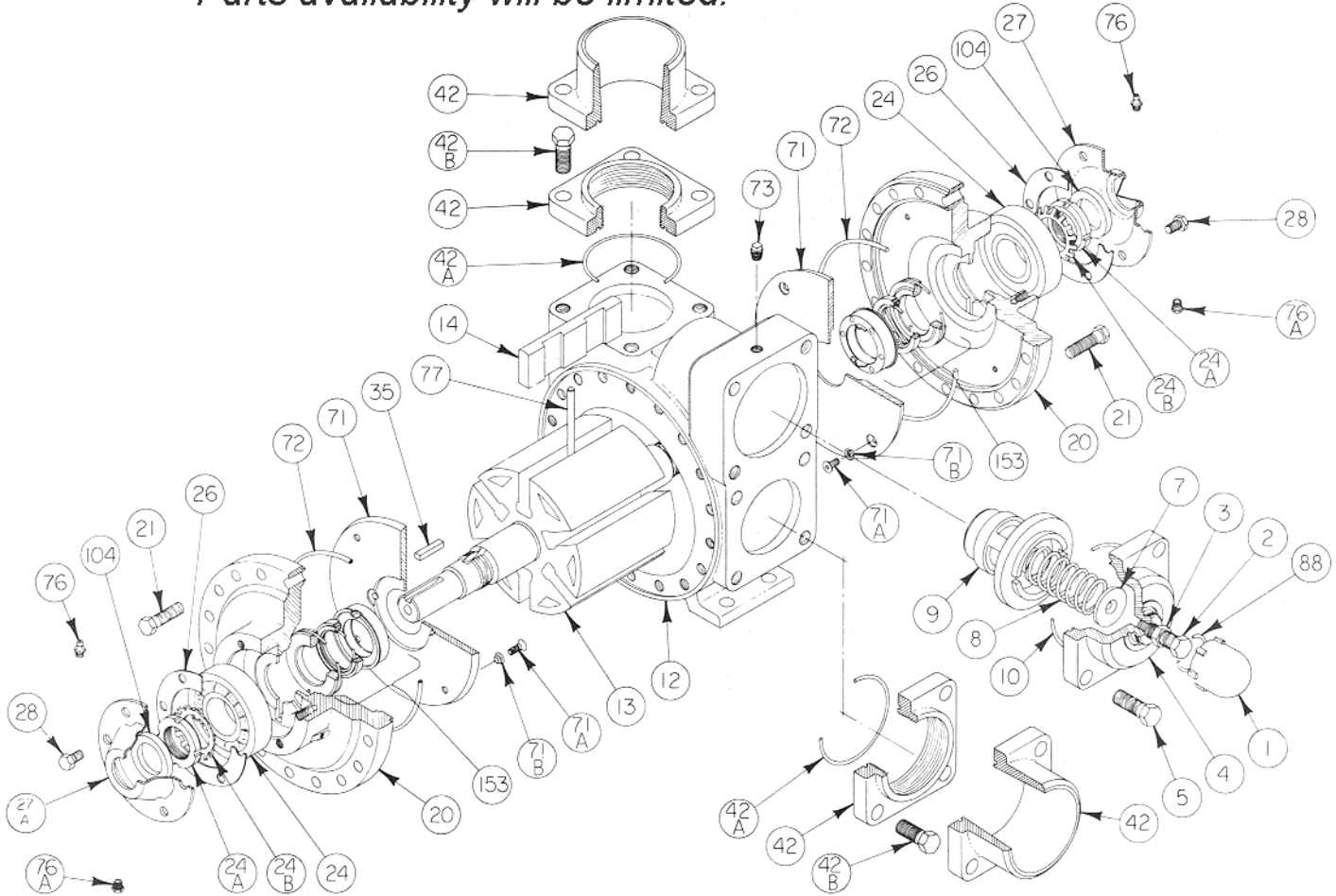
(Aluminum Construction)

960284
PARTS LIST NO. 285/D1

Section 200
Effective November 1988
Replaces Parts List 285/C7
September 1978

(See Instructions 285/D for Operation and Maintenance)

*These models are obsolete.
Parts availability will be limited.*



REF. NO.	PART NAME	PARTS PER PUMP	PART NO. ATX3 $\frac{1}{2}$ B	PART NO. ATXS3 $\frac{1}{2}$ B	REF. NO.	PART NAME	PARTS PER PUMP	PART NO. ATX3 $\frac{1}{2}$ B	PART NO. ATXS3 $\frac{1}{2}$ B
1	Cap - Relief Valve (R/V)	1	412055	412055	28	Capscrews - Bearing Cover	12	920329	920329
2	Adjusting Screw - R/V	1	436307	436307	35	Key - Shaft	1	909183	909183
3	Locknut - Adjusting Screw	1	436355	436357	42	Flange - 3" NPT	2	652012	652022
4	Cover - R/V	1	412005	412005		Flange - 4" Weld		652005	652035
5	Capscrews - R/V Cover	4	920663	920663		Flange - 3" Weld		652007	652017
7	Spring Guide - R/V	1	426355	426357	42A	O-Ring - Flange	2	701937	701937
8	Spring - R/V (51-75 psi)	1	476309	476309	42B	Capscrews - Weld Flange	8	920640	920640
9	Valve - R/V	1	452001	452003		Capscrews - NPT Flange		920663	920663
10	O-Ring - R/V Cover	1	701946	701946	71	Disc	2	062003	062007
12	Cylinder	1	022004	022004	71A	Screws - Disc	8	920007	920007
13	Rotor & Shaft Asy. (Includes Ref. No. 24A)	1	262019	262020	71B	Lockwashers - Disc	8	909622	909634
14	Vane - EC Laminate	6	092029	092029	72	O-Ring - Head	2	701944	701944
20	Head	2	032006	032006	73	Gage Plug	2	908195	908195
21	Capscrews - Head	36	920532	920532	76	Grease Fitting	2	317815	317815
24	Ball Bearing	2	903172	903172	76A	Grease Relief Fitting	2	701992	701992
24A	Locknut - Bearing	2	903523	903523	77	Push Rod (Stainless Steel)	3	-	122003
24B	Lockwasher - Bearing	2	903524	903524		Push Rod (Steel)		122001	-
26	Gasket - Bearing Cover	2	385125	385125	88	O-Ring - R/V Cap	1	701926	701926
27	Bearing Cover - Outboard	1	042015	042015	104	Grease Seal	1	331908	331908
27A	Bearing Cover - Inboard	1	042005	042005					

PARTS LIST NO. 285/D2**ATX3½ - MECHANICAL SEAL - STANDARD**

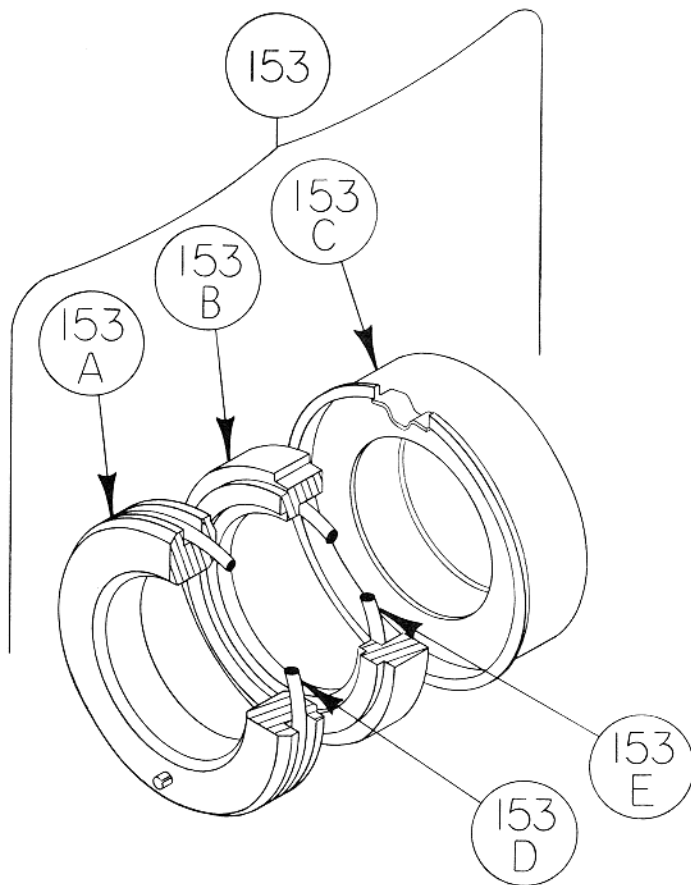
REF. NO.	PART NAME	PARTS PER PUMP	PART NO.
153	Mechanical Seal Assembly	2	332050
153A	Seat-Stationary (Hardened Steel)	2	332005
153B	Face-Carbon Seal	2	331867
153C	Jacket Assembly - Seal	2	331886
153D	O-Ring - Stationary (Buna-N)	2	701934
153E	O-Ring - Rotating (Buna-N)	2	711912

ATXS3½ - MECHANICAL SEAL - STANDARD

REF. NO.	PART NAME	PARTS PER PUMP	PART NO.
153	Mechanical Seal Assembly	2	332051
153A	Seat - Stationary (Stainless Steel)	2	332015
153B	Seal Face & Ring Assembly* (Carbon & Teflon)	2	331844
153C	Jacket Assembly-Seal	2	331886
153D	O-Ring - Stationary (Buna-N)	2	701934

ATXS3½ - MECHANICAL SEAL - OPTIONAL

REF. NO.	PART NAME	PARTS PER PUMP	PART NO.
153	Mechanical Seal Assembly	2	332052
153A	Seat - Stationary (Stainless Steel)	2	332015
153B	Face - Carbon Seal	2	331867
153C	Jacket Assembly - Seal	2	331886
153D	O-Ring - Stationary (Viton)	2	701921
153E	O-Ring - Rotating (Viton)	2	701962



* Teflon Seal Ring is not available as a separate part.